



**PIEDMONT TRIAD**  
**RURAL PLANNING ORGANIZATION**  
**Randolph County CTP Steering Committee Meeting #9**

**Monday, July 28, 2025, at 2:00 pm**

**Location: Asheboro Recreation Center, Asheboro NC**

(Virtual Option Available: <https://ptrc-org.zoom.us/j/83757666760> )

---

## **Agenda**

1. Welcome & Previous Meeting Summary *Carter Spradling (PTRC)*
2. Randolph CTP Progress Updates *Michael Abuya, Sangwoo "Marty" Sung, PhD (NCDOT TPD)*
  - a. Committee Inputs on BY Highways VC maps and BY Bicycle/Pedestrian/Multi-use maps
  - b. Randolph County SPOT Information Follow up
3. Future Year Highways Deficiencies-No Build Scenario Analysis and Preliminary Results *Michael Abuya, Sangwoo "Marty" Sung, PhD (NCDOT TPD)*
  - a. Presentation: Preliminary Analysis Results and Draft Volume Capacity Maps
  - b. Review and Discussion on the FY Highways Deficiencies
4. Upcoming (Tentative) Schedule
  - a. Next Phase: Alternative Analyses (Develop, evaluate, & Analyze Alternatives)
5. Other items
6. Next Meeting: \_\_\_\_\_

**Randolph County CTP Steering Committee Summary**  
**June 23, 2025 – 1:00 pm (virtual meeting)**

**via Zoom.com**

**Attendance:**

John Evans	Community Development Director – Asheboro
Janie Konyek	Assistant Town Manager – Liberty
Trevor Nuttall	Assistant City Manager – Asheboro
Kim Heinzer	Planning Systems Coordinator – Randolph County
William Johnson	Assistant County Manager – Randolph County
Tawana Williams	RCATS Director
Melody Varner	
Michael Abuya	NCDOT Project Engineer- Transportation Planning Division
Dr. Marty Sung	NCDOT PTRPO Coordinator- Transportation Planning Division
Morgan Jackson	NCDOT Intern
Devin Jones	NCDOT Intern
Bryan Kluchar	NCDOT Division 8
Carter Spradling	Assistant Planning Director – PTRC
Tamira Weeks	Planning Intern – PTRC

**Summary of Agenda Items:**

**Welcome**

Carter Spradling welcomed everyone and gave a recap summary of the May meeting.

**CTP Progress Update**

*Sangwoo “Marty” Sung (NCDOT TPD)*

Mr. Sung presented progress updates on base year highway capacity maps and bicycle/pedestrian/multiuse path maps.

**Base Year Public Transit and Rail Analysis**

*Sangwoo “Marty” Sung (NCDOT TPD)*

- 1) Mr. Sung and led a group discussion about identifying public transit and rail facilities and connecting those facilities to key service & goods related destinations.
- 2) Tawana Williams educated the group about current RCATS routes and organization and presented ideas for how that service could be better represented in the upcoming CTP.
- 3) Trevor Nuttall expressed the need for transit to specifically get county residents to larger employers.

**Next Meeting**

Monday, July 28 2:00 PM  
Asheboro Rec Center – 148 North St., Asheboro

Remote attendance is available via: <https://ptrc-org.zoom.us/j/83757666760>

- **Appendix #1: Randolph County SPOT P5 ~ P8 Submittals**

## Randolph County SPOT P5 ~ P8 Submittals (Highways)

Prioritization	Mode	SPOT ID	TIP	Project Category	Route / Facility Name	From/Cross St	To/Cross St	Description	Specific Improvement Type	MPO(s)/RPO(s)	County(s)	Estimated Cost	Action
P.5	Highway	H090061-DA	R-2220DA	Regional Impact	US 64/East Dixie Dr	SR 1409 (Lake Park Road)	Proposed Asheboro Bypass	Widen to Multi-lanes	Widen Existing Roadway	Piedmont Triad RPO	Randolph	N/A	Carryover
P.5	Highway	H090120-B		Statewide Mobility	NC 49	SR 1107 (Lassiter Mill Rd)	Proposed Asheboro Bypass West of SR 1193 (Old NC 49)	Widen to Multi-lanes	Widen Existing Roadway	Piedmont Triad RPO	Randolph	N/A	Resubmit
P.5	Highway	H090256		Regional Impact	NC 49 (Fayetteville St)	SR 2427 (Kinro Rd)	NC 49 (Swannanoa St)	East Liberty Bypass, NC 49 (Fayetteville Street) at SR 2427(Kinro Road) to NC 49 (Swannanoa Street). Two Lanes on Four Lane Right of Way, Part New Location.	Widen Existing Roadway and Construct Part on New Location	Piedmont Triad RPO	Randolph	N/A	Resubmit
P.5	Highway	H090740	R-5844A	Regional Impact	NC 109	NC 24/27	NC 47	NC 24/27 in Troy to NC 47 in Denton. Widen Existing Two-Lane Cross Section, Improve Shoulders, Add Turn Lanes at Traffic Generators, Improve Signalization. Provide Bicycle Accommodation	Modernize Roadway	Piedmont Triad RPO	Randolph	N/A	Resubmit
P.5	Highway	H150910		Statewide Mobility	US 421	Julian Airport		Convert at grade intersection to a diamond interchange to facilitate increased vehicle movements due to the development of the Randolph / Greensboro Mega Site development.	Upgrade At-grade Intersection to Interchange or Grade Separation	Piedmont Triad RPO	Randolph	N/A	Resubmit
P.5	Highway	H170159		Division Needs	Old Liberty Rd	US 220 Bus	Celeste Lane	Widen to Multi-lanes.E11:G13	Widen Existing Roadway	Piedmont Triad RPO	Randolph	N/A	Submit
P.5	Highway	H170427		Division Needs		Celeste Lane	City Limits (Deep River)	Improve roadway for increased safety	Modernize Roadway	Piedmont Triad RPO	Randolph	N/A	Submit
P.5	Highway	H171031		Regional Impact	NC 42/E Salisbury St	N Randolph Ave/MLK Jr. Dr.	NC 42/E Salisbury St. split	Widen to Multi-lanes	Widen Existing Roadway	Piedmont Triad RPO	Randolph	N/A	Submit
P.5	Highway	H171032		Regional Impact	NC 159 (ZOO Parkway) at Ridge St			Improve high-frequency crash intersection for safety purposes	Improve intersection	Piedmont Triad RPO	Randolph	N/A	Submit
P.5	Highway	H171279		Regional Impact	US 220 Bus (N Fayetteville St)	SR 2123 (Caudle Rd.)	SR 2149 (Hub Morris Rd)	Widen to multi-lanes	Widen to multi-lanes	Piedmont Triad RPO	Randolph	N/A	Submit
P.6	Highway	H090061-C			US 64	NC 109	SR1409 (Lake Park Rd)		Widen Existing Roadway	Piedmont Triad RPO	Randolph, Davidson	\$87,832,000.00	Submit
P.6	Highway	H090120-B			NC 49		Existing multi-lanes at Brantley Gordon/Wyanick Meadow Rd	Proposed Asheboro Bypass West of SR 1193 (Old NC 49)	Widen Existing Roadway	Piedmont Triad RPO	Randolph	\$102,925,000.00	Submit
P.6	Highway	H170159			SR 2261 (Old Liberty Rd)	N Fayetteville St. (US 220 Bus)	Celeste Lane		Widen existing roadway	Piedmont Triad RPO	Randolph	\$11,394,000.00	Submit
P.6	Highway	H171031			NC 42/E Salisbury St	N. Randolph Ave/MLK Jr. Drive	NC 42/E Salisbury St. split		Widen Existing Roadway	Piedmont Triad RPO	Randolph	\$4,866,000.00	Submit
P.6	Highway	H171279			US 220 Bus (N Fayetteville St)	SR 2149 (Hub Morris Rd)	SR 2123 (Caudle Rd)		Widen Existing Roadway	Piedmont Triad RPO	Randolph	\$19,421,000.00	Submit
P.6	Highway	H171794			US 220 Bus (N Fayetteville St)	SR 2269 (Vision Dr)	SR 2149 (Hub Morris Rd)		Widen Existing Roadway	Piedmont Triad RPO	Randolph	\$42,676,000.00	Submit
P.6	Highway	H184152			NC 159	NC 159 at Pine Grove Dr			Improve intersection	Piedmont Triad RPO	Randolph	\$1,430,000.00	Submit
P.6	Highway	H184153			US 64, SR 2237 (E Salisbury St)	US 64 at SR 2337 (E. Salisbury St)			Improve intersection	Piedmont Triad RPO	Randolph	\$2,860,000.00	Submit
P.6	Highway	H191431			NC 42	US 64 (Dixie Dr)	Asheboro Bypass		Widen Existing Roadway	Piedmont Triad RPO	Randolph	\$13,673,000.00	Submit
P.6	Highway	H191514			SR 2820 (Crestview Church Rd)	Crestview Rd	Browsers Chapel Rd		Construct Roadway on New Location	Piedmont Triad RPO	Randolph	\$10,649,000.00	Submit
P.6	Highway	H191515			SR 2189 (MLK Jr Dr)	SR 2237 (E Salisbury St)	SR 2237 (E Salisbury St)		Widen Existing Roadway	Piedmont Triad RPO	Randolph	\$13,649,000.00	Submit
P.6	Highway	H191542			SR 2261 (Old Liberty Rd)	Central Falls Rd			Improve intersection	Piedmont Triad RPO	Randolph	\$1,430,000.00	Submit
P.7	Highway	H184152		Regional Impact	NC 159	Pine Grove Drive		Installation of a left turn lane on southbound NC 159 and deceleration lane on northbound NC 159 for movement onto Pine Grove Drive	10 - improve intersection	Piedmont Triad RPO	Randolph	\$200,000.00	Submit
P.7	Highway	H191514		Division Needs	New Route - SR 2820 (Crestview Church Rd)	Crestview Church Rd	Browsers Chapel Rd	Construct roadway on new location	5 - construct roadway on new location	Piedmont Triad RPO	Randolph	\$11,000,000.00	Submit
P.7	Highway	H191515		Division Needs	SR 2189 (MLK Jr Dr)	SR 2237 (E Salisbury St)	SR 2237 (E Salisbury St)	Upgrade roadway to accommodate safe vehicle and pedestrian traffic	1- widen existing roadway	Piedmont Triad RPO	Randolph	\$13,900,000.00	Submit
P.7	Highway	H191542		Division Needs	SR 2261 (Old Liberty Rd)	Central Falls Rd		Reconfigure intersection to improve sight distance	10 - improve intersection	Piedmont Triad RPO	Randolph	\$2,500,000.00	Submit
P.7	Highway	H192030		Regional Impact	NC 22	SR 2445 (Benny Lineberry)	Guilford County Line	Modernize Roadway by improving a roadway to current design standards primarily by increasing the lane and/or shoulder width and adding turning lanes at intersections to improve mobility on NC 22.	16 - Modernize roadway	Piedmont Triad RPO	Randolph	\$27,200,000.00	Submit
P.7	Highway	H230120		Division Needs	Lexington Rd	Mountain Rd	I 73/74	Potential roundabout variation (peanut) to slow traffic to improve safety and provide better access	dual roundabout	Piedmont Triad RPO	Randolph	N/A	Submit
P.7	Highway	H230123		Division Needs	W.O.W. Rd	Worthville Rd	Old Liberty Rd	Modernize roadway for safety and improved access with a multi-use path.	16 - Modernize roadway	Piedmont Triad RPO	Randolph	N/A	Submit
P.8	Highway	H184152		Regional Impact	NC 159	Pine Grove Drive		Installation of a left turn lane on southbound NC 159 and deceleration lane on northbound NC 159 for movement onto Pine Grove Drive	10 - improve intersection	Piedmont Triad RPO	Randolph	\$200,000.00	Submit
P.8	Highway	H191514		Division Needs	New Route - SR 2820 (Crestview Church Rd)	Crestview Church Rd	Browsers Chapel Rd	Construct roadway on new location	5 - construct roadway on new location	Piedmont Triad RPO	Randolph	\$11,000,000.00	Submit

Prioritization	Mode	SPOT ID	TIP	Project Category	Route / Facility Name	From/Cross St	To/Cross St	Description	Specific Improvement Type	MPO(s)/RPO(s)	County(s)	Estimated Cost	Action
P.8	Highway	H191515		Division Needs	SR 2189 (MLK Jr Dr)	SR 2237 (E Salisbury St)	SR 2237 (E Salisbury St)	Upgrade roadway to accommodate safe vehicle and pedestrian traffic	1- widen existing roadway	Piedmont Triad RPO	Randolph	\$13,900,000.00	Submit
P.8	Highway	H191542		Division Needs	SR 2261 (Old Liberty Rd)	Central Falls Rd		Reconfigure intersection to improve sight distance	10 - improve intersection	Piedmont Triad RPO	Randolph	\$2,500,000.00	Submit
P.8	Highway	H192030		Regional Impact	NC 22	SR 2445 (Benny Lineberry)	Guildford County Line	Modernize Roadway by improving a roadway to current design standards primarily by increasing the lane and/or shoulder width and adding turning lanes at intersections to improve mobility on NC 22.	16 - Modernize roadway	Piedmont Triad RPO	Randolph	\$27,200,000.00	Submit
P.8	Highway	H230120		Division Needs	Lexington Rd	Mountain Rd	I 73/74	Potential roundabout variation (peanut) to slow traffic to improve safety and provide better access	dual roundabout	Piedmont Triad RPO	Randolph	N/A	Submit
P.8	Highway	H230123		Division Needs	W.O.W. Rd	Worthville Rd	Old Liberty Rd	Modernize roadway for safety and improved access with a multi-use path.	16 - Modernize roadway	Piedmont Triad RPO	Randolph	N/A	Submit

### Randolph County SPOT P5 ~ P8 Submittals (Bike/Ped)

Prioritization	Mode	SPOT ID	TI P	Project Category	Route / Facility Name	From/Cross St	To/Cross St	Description	Specific Improvement Type	MPO(s)/RPO(s)	County(s)	Estimated Cost	Prioritization Action
P.5	Bike/Ped	B142033		Division Needs	Deep River State Trail	Existing Trail	Cedar Falls	Construct multi-use greenway extension from the existing and funded portions of trail from the center of Franklinville	Off-Road/Separated Linear Bicycle Facility (Bicycle)	Piedmont Triad RPO	Randolph	N/A	Resubmit
P.5	Bike/Ped	B151031		Division Needs	Russel Walker Ave/Riverland Rd	Worthville Rd	To/Cross Street: Deep River	Construct sidewalk to connect with the funded Deep River State Trail.	Protected Linear Pedestrian Facility (Pedestrian)	Piedmont Triad RPO	Randolph	N/A	Resubmit
P.5	Bike/Ped	B170986		Division Needs	US 64/East Dixie Dr	Executive Way	CenterPoint Plaza Shopping Center	Construct sidewalk from Executive Way to Dublin Rd. south and east to CenterPoint Plaza.	Protected Linear Pedestrian Facility (Pedestrian)	Piedmont Triad RPO	Randolph	N/A	Submit
P.5	Bike/Ped	B170994		Division Needs	Deep River State Trail - Sandy River Crossing Bridge	West Side of Deep River State Trail	East Side of Deep River State Trail	Construct multi-use bridge over Sandy Creek to connect two segments of the Deep River State Trail.	Protected Linear Pedestrian Facility (Pedestrian)	Piedmont Triad RPO	Randolph	N/A	Submit
P.5	Bike/Ped	B171004		Division Needs	Ayersville Rd	US 64	Country Club Dr	Construct sidewalk and improve pedestrian crossing facilities.	Protected Linear Pedestrian Facility (Pedestrian)	Piedmont Triad RPO	Randolph	N/A	Submit
P.6	Bike/Ped	B142033			Deep River State Trail	Existing Trail	Cedar Falls	Construct Multi-Use Path		Piedmont Triad RPO	Randolph	\$3,545,000.00	Submit
P.6	Bike/Ped	B151031			Russel Walker Ave/Riverland Rd	Worthville Rd	Deep River	Construct Multi-Use Path		Piedmont Triad RPO	Randolph	\$855,000.00	Submit
P.6	Bike/Ped	B170994			Deep River State Trail - Sandy River Crossing Bridge	West Side of Deep River State Trail	East Side of Deep River State Trail	Construct multi-use bridge to accommodate bike/ped trail users		Piedmont Triad RPO	Randolph	\$340,000.00	Submit
P.6	Bike/Ped	B171004			Asheboro Highschool Sidewalk	US 64 (Dixie Dr)	Country Club Dr	Construct side and improve pedestrian crossing facilities		Piedmont Triad RPO	Randolph	\$330,000.00	Submit
P.6	Bike/Ped	B191869			S Cox St	US 64	Stowe Ave	Construct sidewalk		Piedmont Triad RPO	Randolph	\$405,000.00	Submit
P.6	Bike/Ped	B191871			US 64 (W Dixie Dr) Restaurant row Sidewalk	I-73/I-74 Interchange	S Park St/Country Club Dr	Construct sidewalk		Piedmont Triad RPO	Randolph	\$750,000.00	Submit
P.6	Bike/Ped	B191875			E Presnell St Sidewalk	Vance St	Greensboro St	Construct sidewalk		Piedmont Triad RPO	Randolph	\$630,000.00	Submit
P.6	Bike/Ped	B191888			SR 2261 (Swannanoa Ave) Sidewalk	Kirkman St	SR 1006 (Greensboro St)	Construct sidewalk		Piedmont Triad RPO	Randolph	\$795,000.00	Submit
P.6	Bike/Ped	B191891			Seagrove Town Core Sidealks	US 220 Bus (N Broad St)	SR 2853 (Ridge St)	Construct sidewalk		Piedmont Triad RPO	Randolph	\$120,000.00	Submit
P.7	Bike/Ped	B191869		Division Needs	S Cox Rd	US 64	Stowe Ave	Construct sidewalk	7 - Protected linear pedestrian facility (Pedestrian)	Piedmont Triad RPO	Randolph	\$344,000.00	Submit
P.7	Bike/Ped	B191871		Division Needs	US 64 (W Dixie Dr) Restaurant row Sidewalk	I-73/I-74 Interchange	S Park St/Country Club Dr	Construct sidewalk	7 - Protected linear pedestrian facility (Pedestrian)	Piedmont Triad RPO	Randolph	\$600,000.00	Submit
P.7	Bike/Ped	B191875		Division Needs	E Presnell St Sidewalk	Vance St	Greensboro St	Construct sidewalk	7 - Protected linear pedestrian facility (Pedestrian)	Piedmont Triad RPO	Randolph	\$672,000.00	Submit
P.7	Bike/Ped	B191888		Division Needs	SR 2261 (Swannanoa Ave) Sidewalk	Kirkman St	SR 1006 (Greensboro St)	Construct sidewalk	7 - Protected linear pedestrian facility (Pedestrian)	Piedmont Triad RPO	Randolph	\$636,000.00	Submit
P.7	Bike/Ped	B191891		Division Needs	Seagrove Town Core Sidealks	US 220 Bus (N Broad St)	SR 2853 (Ridge St)	Construct sidewalk	7 - Protected linear pedestrian facility (Pedestrian)	Piedmont Triad RPO	Randolph	\$96,000.00	Submit
P.7	Bike/Ped	B230267		Division Needs	Starmount Rd	Downtown Liberty	Toyota Megasite	Multi use path	MUP	Piedmont Triad RPO	Randolph		Submit
P.8	Bike/Ped	B191869		Division Needs	S Cox Rd	US 64	Stowe Ave	Construct sidewalk	7 - Protected linear pedestrian facility (Pedestrian)	Piedmont Triad RPO	Randolph	\$344,000.00	Submit
P.8	Bike/Ped	B191871		Division Needs	US 64 (W Dixie Dr) Restaurant row Sidewalk	I-73/I-74 Interchange	S Park St/Country Club Dr	Construct sidewalk	7 - Protected linear pedestrian facility (Pedestrian)	Piedmont Triad RPO	Randolph	\$600,000.00	Submit
P.8	Bike/Ped	B191875		Division Needs	E Presnell St Sidewalk	Vance St	Greensboro St	Construct sidewalk	7 - Protected linear pedestrian facility (Pedestrian)	Piedmont Triad RPO	Randolph	\$672,000.00	Submit
P.8	Bike/Ped	B191888		Division Needs	SR 2261 (Swannanoa Ave) Sidewalk	Kirkman St	SR 1006 (Greensboro St)	Construct sidewalk	7 - Protected linear pedestrian facility (Pedestrian)	Piedmont Triad RPO	Randolph	\$636,000.00	Submit
P.8	Bike/Ped	B191891		Division Needs	Seagrove Town Core Sidealks	US 220 Bus (N Broad St)	SR 2853 (Ridge St)		7 - Protected linear pedestrian facility (Pedestrian)	Piedmont Triad RPO	Randolph	\$96,000.00	
P.8	Bike/Ped	B230267		Division Needs	Starmount Rd	Downtown Liberty	Toyota Megasite	Multi use path	MUP	Piedmont Triad RPO	Randolph	N/A	Submit

- **Appendix # 2: Base Year 2022 Highway Deficiencies (Volume Capacity) Draft Maps**

Figure 2  
**2022 VOLUME AND CAPACITY DEFICIENCIES**



**RANDOLPH COUNTY**  
 CTP Analysis and Information

Volume and Capacity Ratio Features  
 (Base Year 2022)

	Under Capacity (0-0.79)
	Near Capacity (0.80-0.99)
	Over Capacity (1.00+)

Other Features

- Studied Roads
- High Point MPO
- Piedmont Triad RPO



Full report at:  
<https://tinyurl.com/4k2xucan>



Sheet 1 of 5

Base map date: April 04, 2024

**Legal Disclaimer**

This product contains mapping data for informational and planning purposes only, and is subject to change. Users should review or consult the primary data sources to ascertain the usability of the information.

**WORKING COPY**  
 Plan Date: April 14, 2025

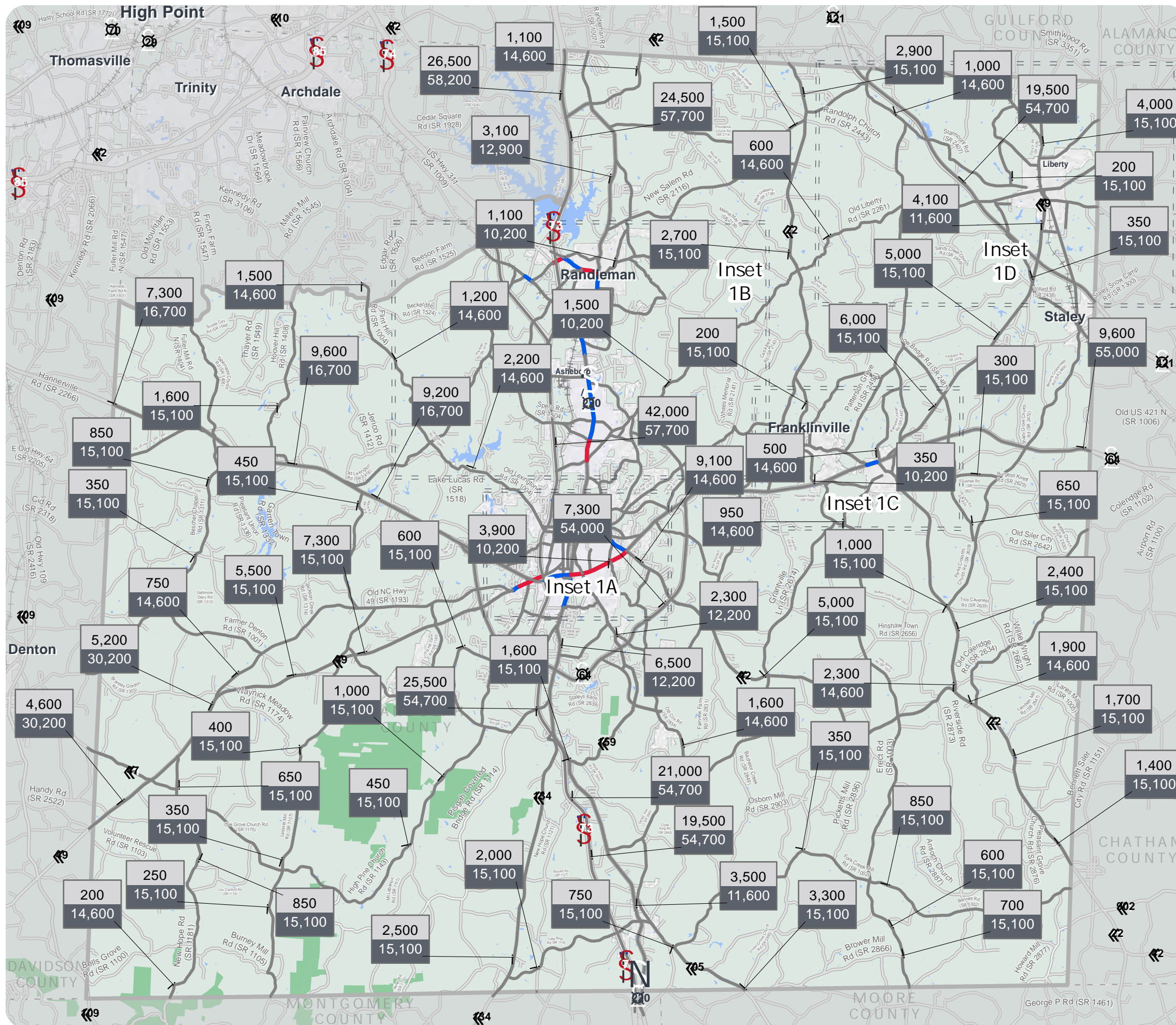


Figure 2  
**2022 VOLUME AND CAPACITY DEFICIENCIES**



**RANDOLPH COUNTY**  
 CTP Analysis and Information

Volume and Capacity Ratio Features  
 (Base Year 2022)

2022 Volume Capacity	Under Capacity (0-0.79)
2022 Volume Capacity	Near Capacity (0.80-0.99)
2022 Volume Capacity	Over Capacity (1.00+)

Other Features

- Studied Roads
- High Point MPO
- Piedmont Triad RPO



Full report at:  
<https://tinyurl.com/4k2xucan>



Sheet 1A of 5  
 Asheboro Inset

Base map date: April 04, 2024

**Legal Disclaimer**

This product contains mapping data for informational and planning purposes only, and is subject to change. Users should review or consult the primary data sources to ascertain the usability of the information.

**WORKING COPY**  
 Plan Date: April 14, 2025

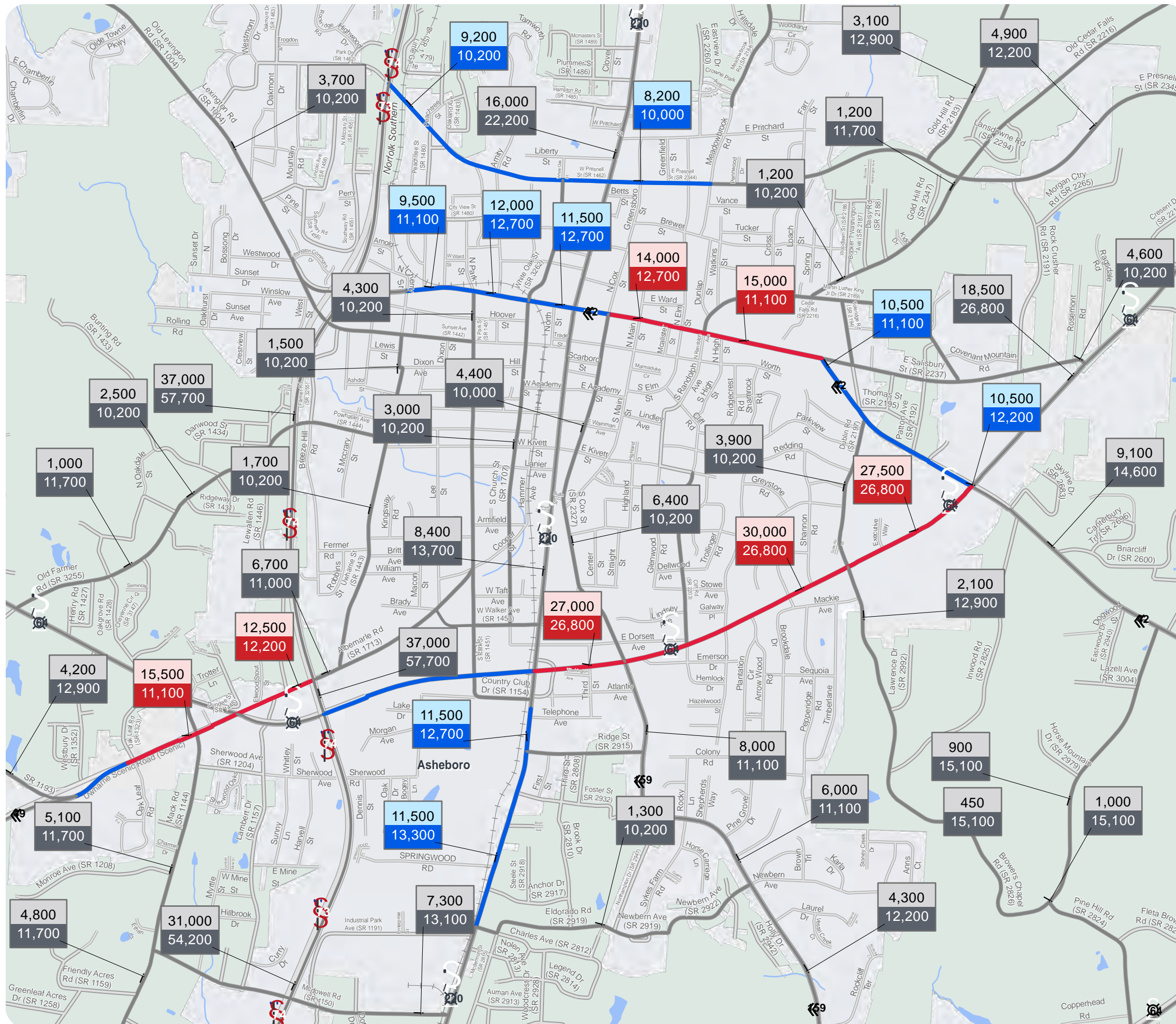


Figure 2  
**2022 VOLUME AND CAPACITY DEFICIENCIES**



**RANDOLPH COUNTY**  
 CTP Analysis and Information

Volume and Capacity Ratio Features  
 (Base Year 2022)

2022 Volume Capacity	Under Capacity (0-0.79)
2022 Volume Capacity	Near Capacity (0.80-0.99)
2022 Volume Capacity	Over Capacity (1.00+)

Other Features

- Studied Roads
- High Point MPO
- Piedmont Triad RPO



Full report at:  
<https://tinyurl.com/4k2xucan>



Sheet 1B of 5  
 Randleman Inset

Base map date: April 04, 2024

**Legal Disclaimer**

This product contains mapping data for informational and planning purposes only, and is subject to change. Users should review or consult the primary data sources to ascertain the usability of the information.

**WORKING COPY**  
 Plan Date: April 14, 2025

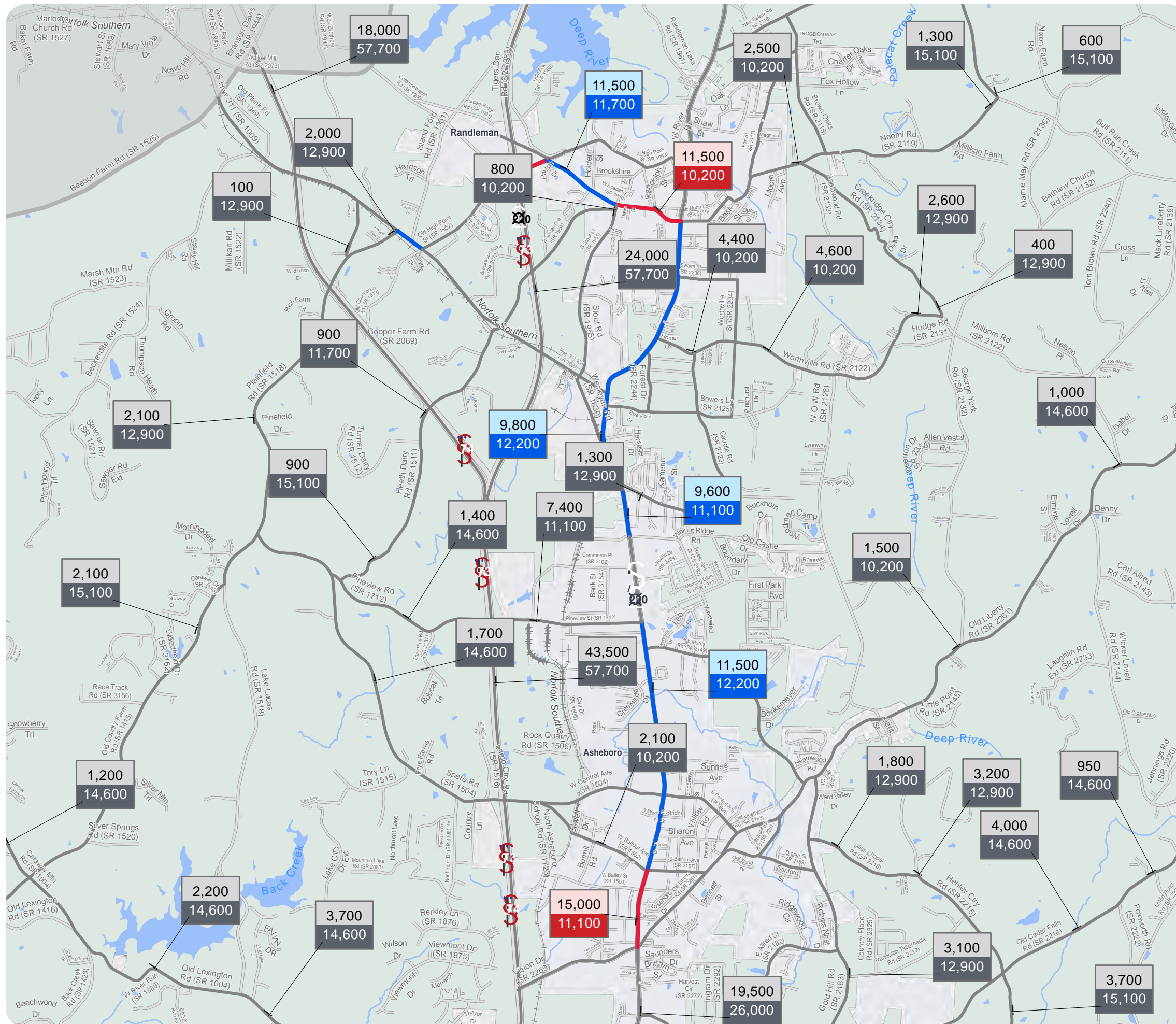


Figure 2  
**2022 VOLUME AND CAPACITY DEFICIENCIES**



**RANDOLPH COUNTY**  
 CTP Analysis and Information

Volume and Capacity Ratio Features  
 (Base Year 2022)

2022 Volume Capacity	Under Capacity (0-0.79)
2022 Volume Capacity	Near Capacity (0.80-0.99)
2022 Volume Capacity	Over Capacity (1.00+)

Other Features

- Studied Roads
- High Point MPO
- Piedmont Triad RPO



Full report at:  
<https://tinyurl.com/4k2xucan>



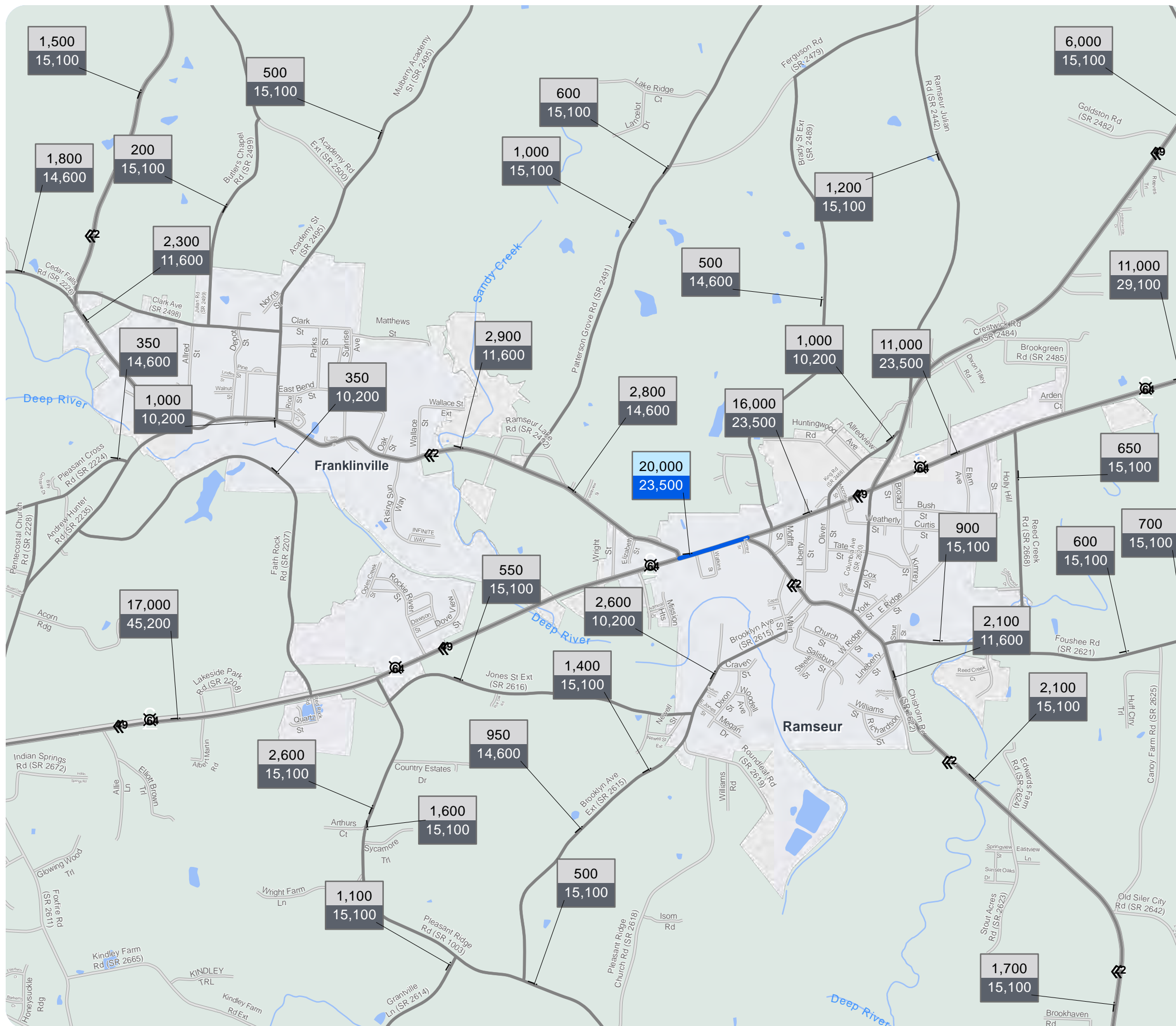
Sheet 1C of 5  
 Ramseur Inset

Base map date: April 04, 2024

**Legal Disclaimer**

This product contains mapping data for informational and planning purposes only, and is subject to change. Users should review or consult the primary data sources to ascertain the usability of the information.

**WORKING COPY**  
 Plan Date: April 14, 2025



**Figure 2**  
**2022 VOLUME AND CAPACITY DEFICIENCIES**



**RANDOLPH COUNTY**  
CTP Analysis and Information

Volume and Capacity Ratio Features  
(Base Year 2022)

<b>2022 Volume</b> Capacity	Under Capacity (0-0.79)
<b>2022 Volume</b> Capacity	Near Capacity (0.80-0.99)
<b>2022 Volume</b> Capacity	Over Capacity (1.00+)

Other Features

- Studied Roads
- High Point MPO
- Piedmont Triad RPO



Full report at:  
<https://tinyurl.com/4k2xucan>



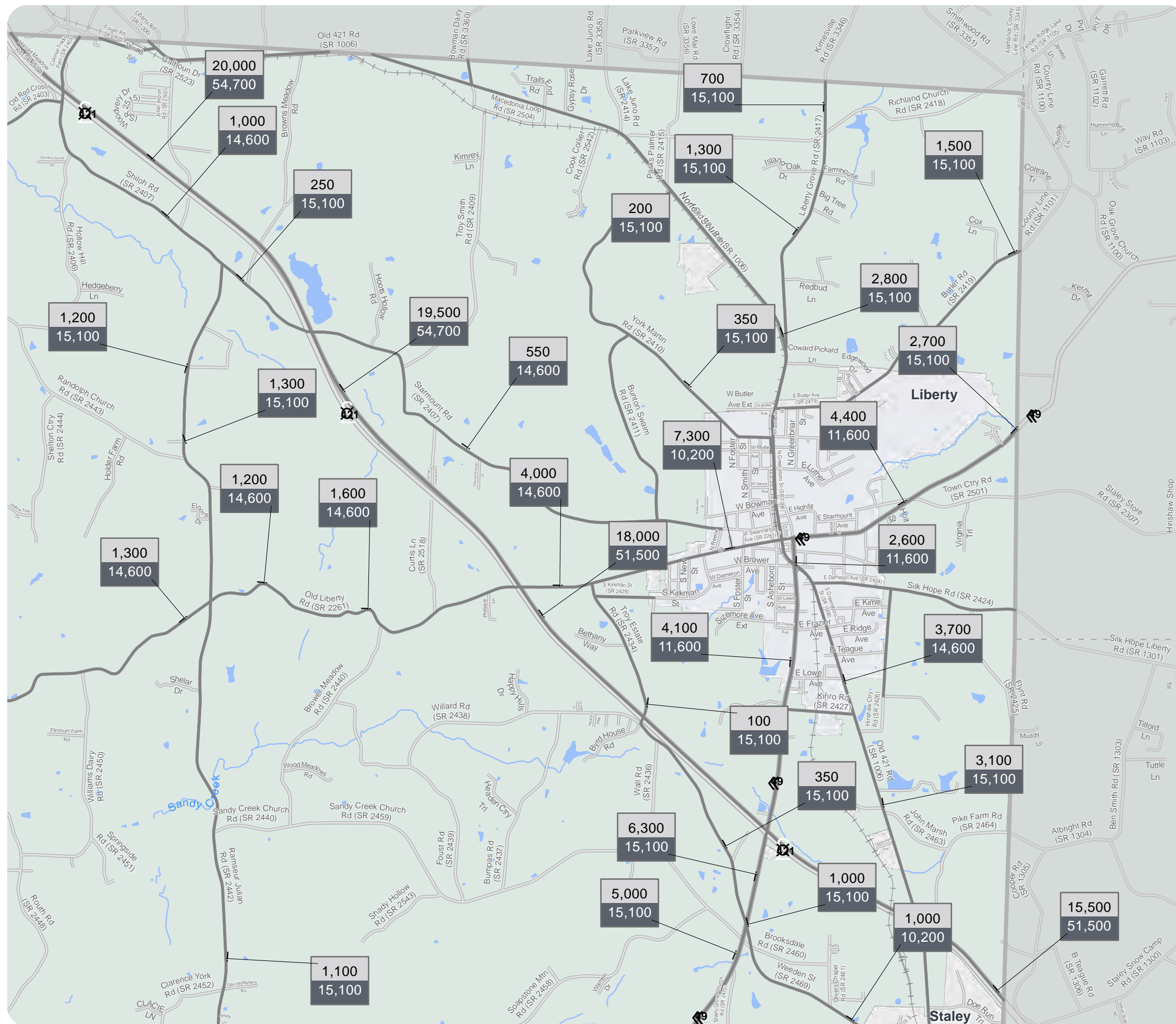
Sheet 1D of 5  
Liberty Inset

Base map date: April 04, 2024

**Legal Disclaimer**

This product contains mapping data for informational and planning purposes only, and is subject to change. Users should review or consult the primary data sources to ascertain the usability of the information.

**WORKING COPY**  
Plan Date: April 14, 2025



- **Appendix #3: Future Year 2050 Highway Deficiencies (Volume Capacity) Draft Maps**

Figure 2  
**2050 VOLUME AND CAPACITY DEFICIENCIES**



**RANDOLPH COUNTY**  
 CTP Analysis and Information

Volume and Capacity Ratio Features  
 (Future Year 2050)

	Under Capacity (0-0.79)
	Near Capacity (0.80-0.99)
	Over Capacity (1.00+)

Other Features

- Studied Roads
- High Point MPO
- Piedmont Triad RPO



Full report at:  
<https://tinyurl.com/4k2xucan>



Sheet 1 of 7

Base map date: April 04, 2024

**Legal Disclaimer**

This product contains mapping data for informational and planning purposes only, and is subject to change. Users should review or consult the primary data sources to ascertain the usability of the information.

**WORKING COPY**  
 Plan Date: July 23, 2025

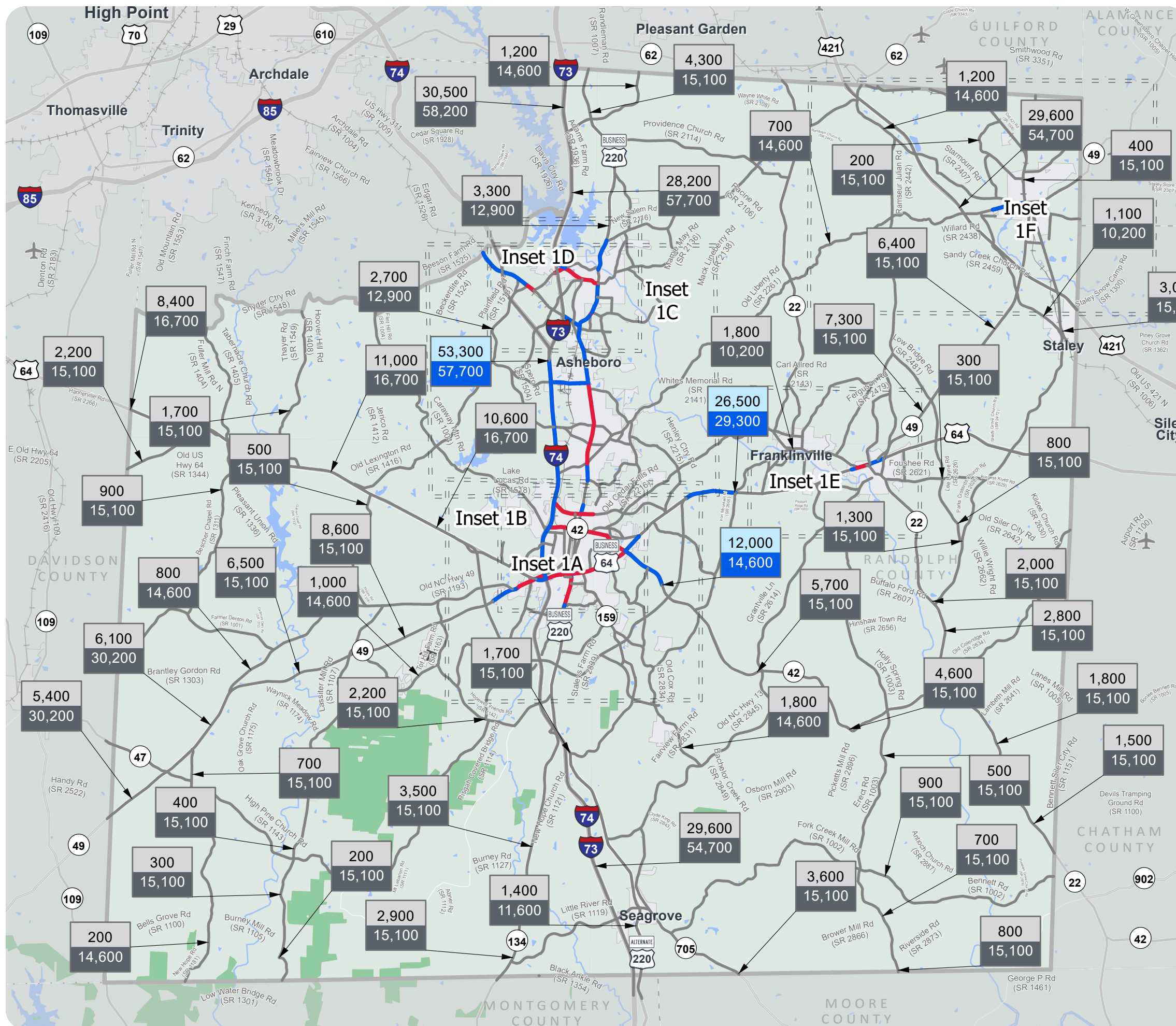


Figure 2  
**2050 VOLUME AND CAPACITY DEFICIENCIES**



**RANDOLPH COUNTY**  
 CTP Analysis and Information

Volume and Capacity Ratio Features  
 (Future Year 2050)

2050 Volume Capacity	Under Capacity (0-0.79)
2050 Volume Capacity	Near Capacity (0.80-0.99)
2050 Volume Capacity	Over Capacity (1.00+)

Other Features

- Studied Roads
- High Point MPO
- Piedmont Triad RPO



Full report at:  
<https://tinyurl.com/4k2xucan>



Sheet 1A of 7  
 Asheboro Downtown Inset

Base map date: April 04, 2024

**Legal Disclaimer**

This product contains mapping data for informational and planning purposes only, and is subject to change. Users should review or consult the primary data sources to ascertain the usability of the information.

**WORKING COPY**  
 Plan Date: July 23, 2025

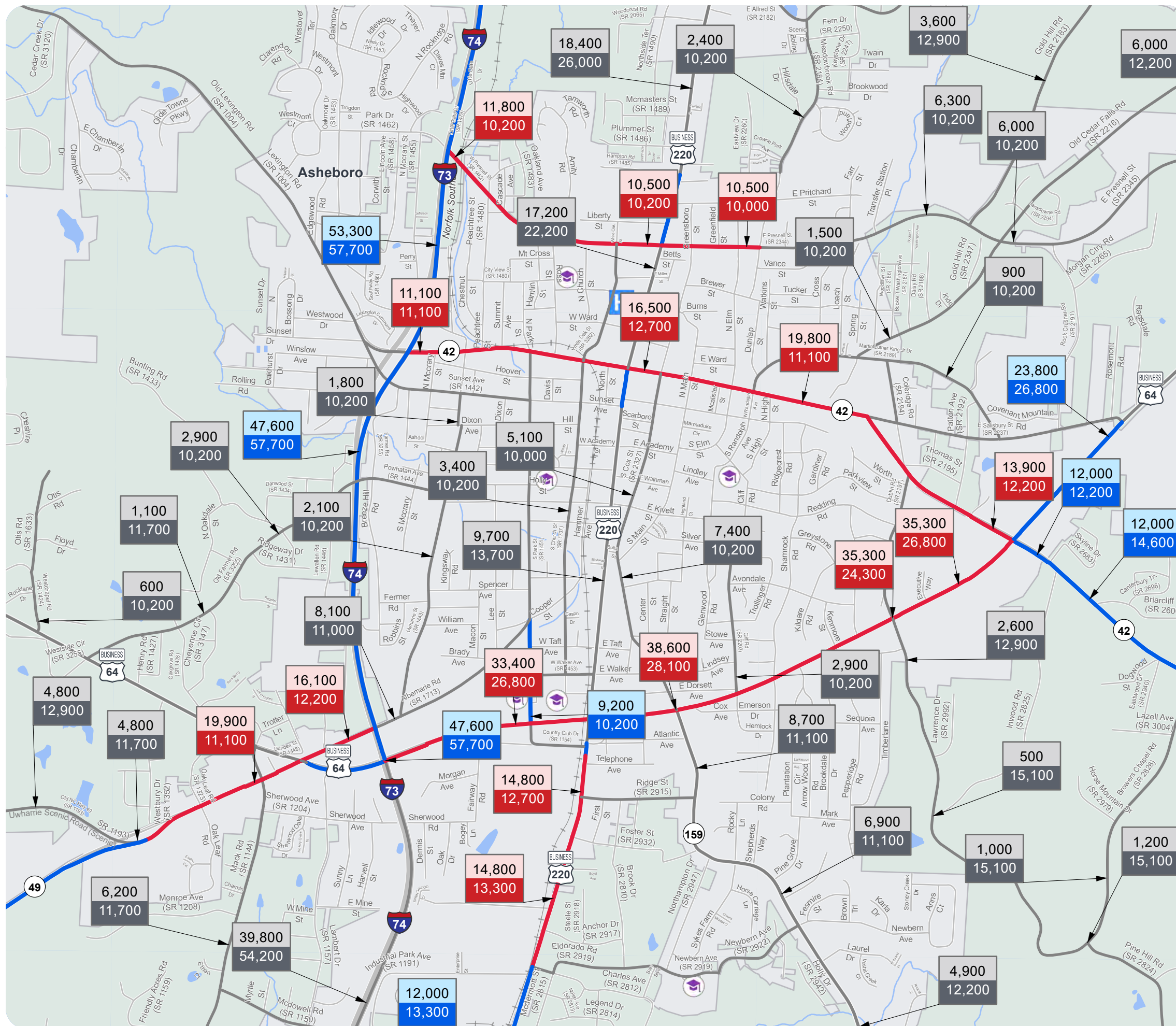


Figure 2  
**2050 VOLUME AND CAPACITY DEFICIENCIES**



**RANDOLPH COUNTY**  
 CTP Analysis and Information

Volume and Capacity Ratio Features  
 (Future Year 2050)

2050 Volume Capacity	Under Capacity (0-0.79)
2050 Volume Capacity	Near Capacity (0.80-0.99)
2050 Volume Capacity	Over Capacity (1.00+)

Other Features

- Studied Roads
- High Point MPO
- Piedmont Triad RPO



Full report at:  
<https://tinyurl.com/4k2xucan>



Sheet 1B of 7  
**Asheboro US 64 Bypass Inset**  
 Base map date: April 04, 2024

**Legal Disclaimer**

This product contains mapping data for informational and planning purposes only, and is subject to change. Users should review or consult the primary data sources to ascertain the usability of the information.

**WORKING COPY**  
 Plan Date: July 23, 2025

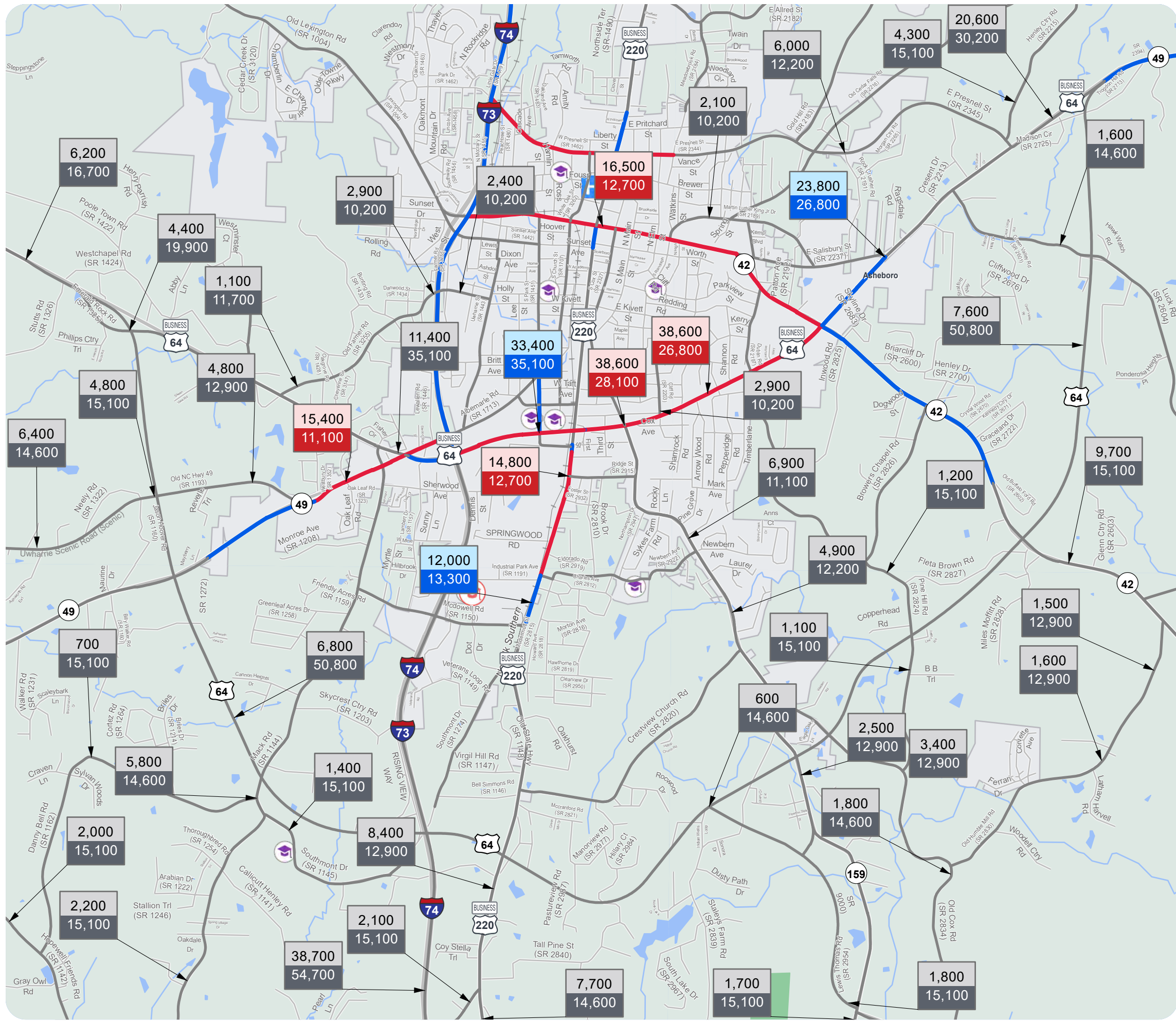


Figure 2  
**2050 VOLUME AND CAPACITY DEFICIENCIES**



**RANDOLPH COUNTY**  
 CTP Analysis and Information

Volume and Capacity Ratio Features  
 (Future Year 2050)

2050 Volume Capacity	Under Capacity (0-0.79)
2050 Volume Capacity	Near Capacity (0.80-0.99)
2050 Volume Capacity	Over Capacity (1.00+)

Other Features

- Studied Roads
- High Point MPO
- Piedmont Triad RPO



Full report at:  
<https://tinyurl.com/4k2xucan>



Sheet 1C of 7  
 Asheboro North Inset  
 Base map date: April 04, 2024

**Legal Disclaimer**

This product contains mapping data for informational and planning purposes only, and is subject to change. Users should review or consult the primary data sources to ascertain the usability of the information.

**WORKING COPY**  
 Plan Date: July 23, 2025

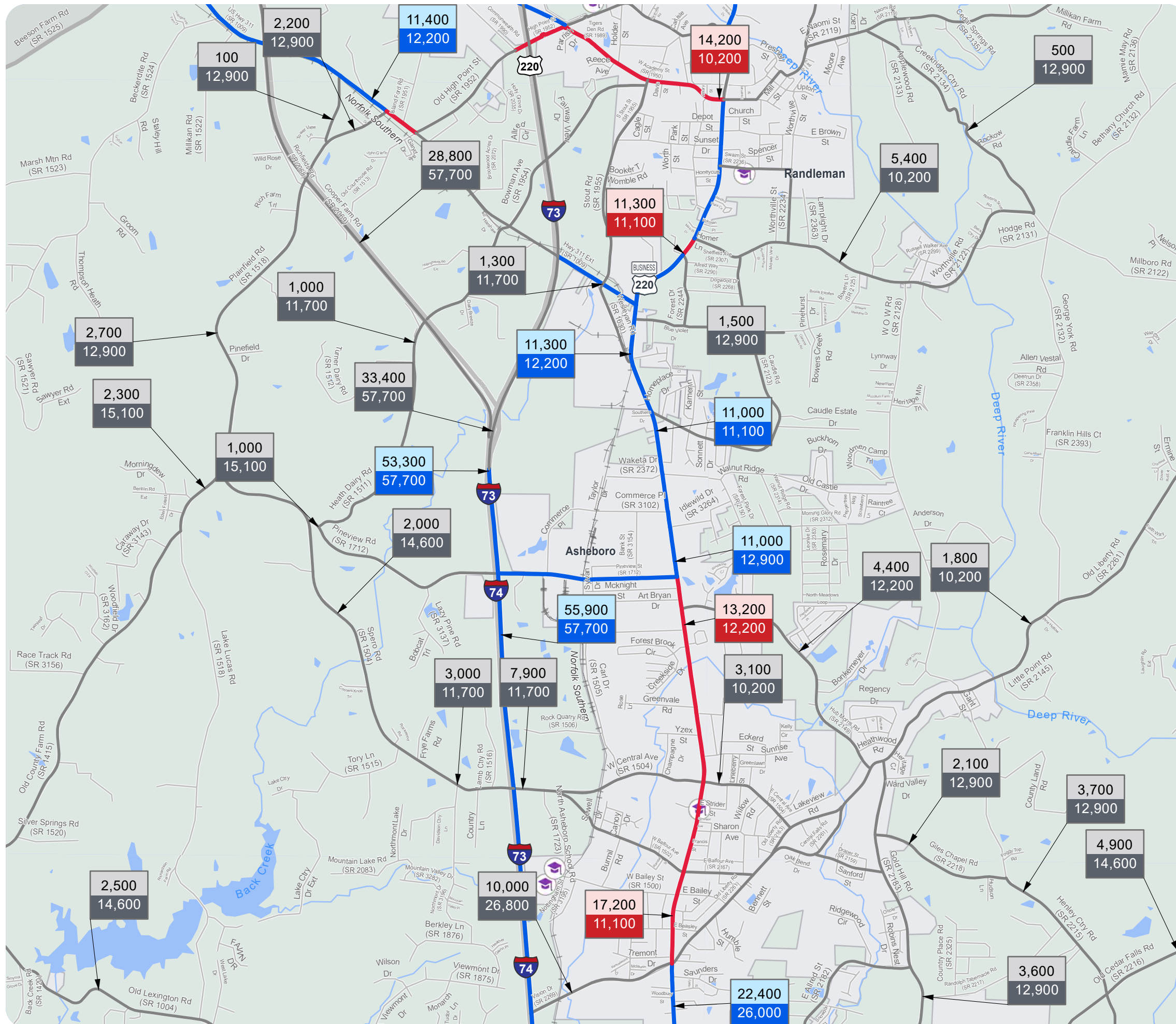


Figure 2  
**2050 VOLUME AND CAPACITY DEFICIENCIES**



**RANDOLPH COUNTY**  
 CTP Analysis and Information

Volume and Capacity Ratio Features  
 (Future Year 2050)

- 2050 Volume  
Capacity  Under Capacity  
(0-0.79)
- 2050 Volume  
Capacity  Near Capacity  
(0.80-0.99)
- 2050 Volume  
Capacity  Over Capacity  
(1.00+)

Other Features

- Studied Roads
- High Point MPO
- Piedmont Triad RPO



Full report at:  
<https://tinyurl.com/4k2xucan>

0 0.1 0.2 0.4 0.6 0.8  
 Miles

Sheet 1D of 7  
 Randleman Inset

Base map date: April 04, 2024

**Legal Disclaimer**

This product contains mapping data for informational and planning purposes only, and is subject to change. Users should review or consult the primary data sources to ascertain the usability of the information.

**WORKING COPY**  
 Plan Date: July 23, 2025

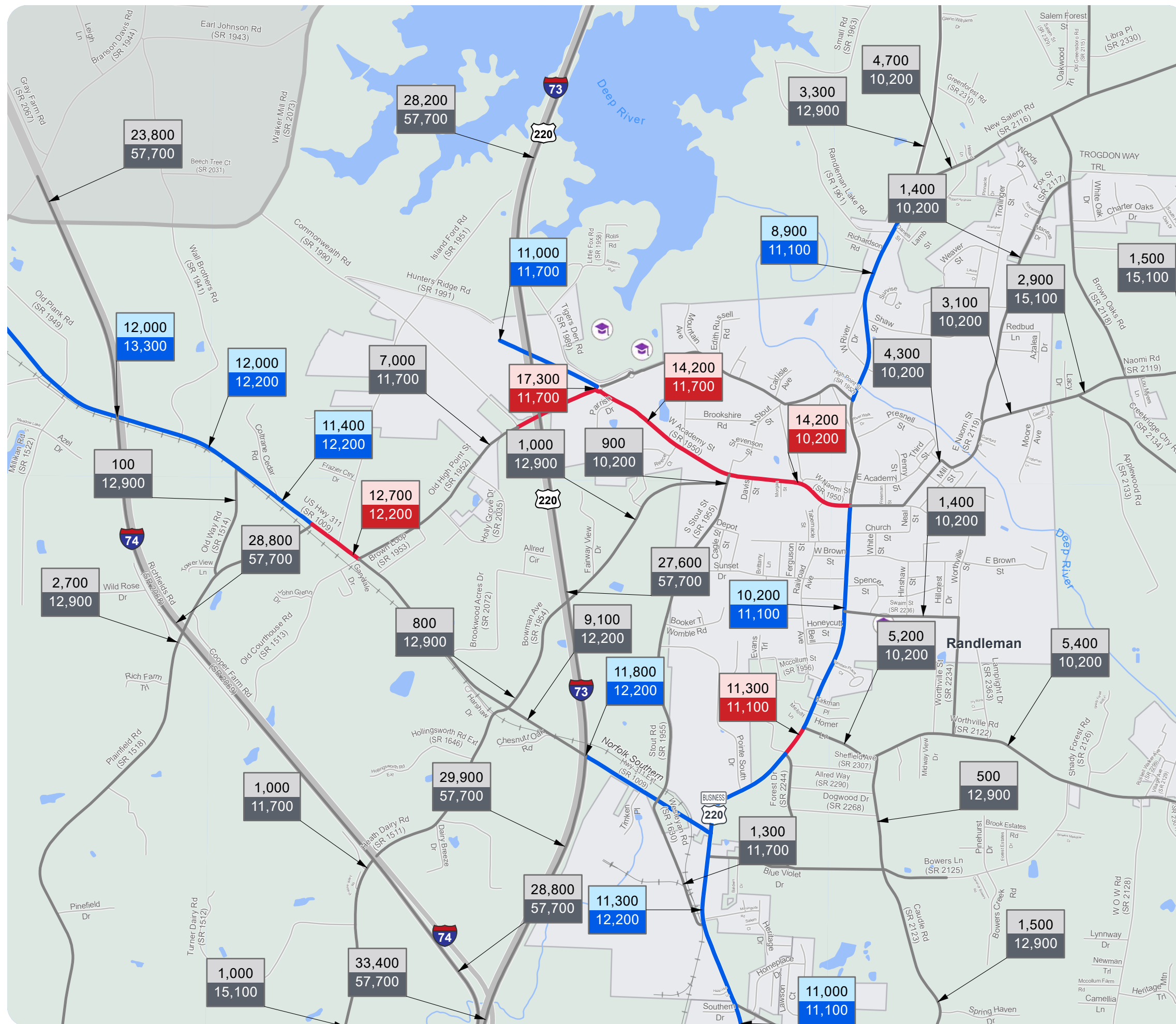


Figure 2  
**2050 VOLUME AND CAPACITY DEFICIENCIES**



**RANDOLPH COUNTY**  
 CTP Analysis and Information

Volume and Capacity Ratio Features  
 (Future Year 2050)

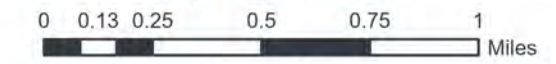
	Under Capacity (0-0.79)
	Near Capacity (0.80-0.99)
	Over Capacity (1.00+)

Other Features

- Studied Roads
- High Point MPO
- Piedmont Triad RPO



Full report at:  
<https://tinyurl.com/4k2xucan>



Sheet 1E of 7

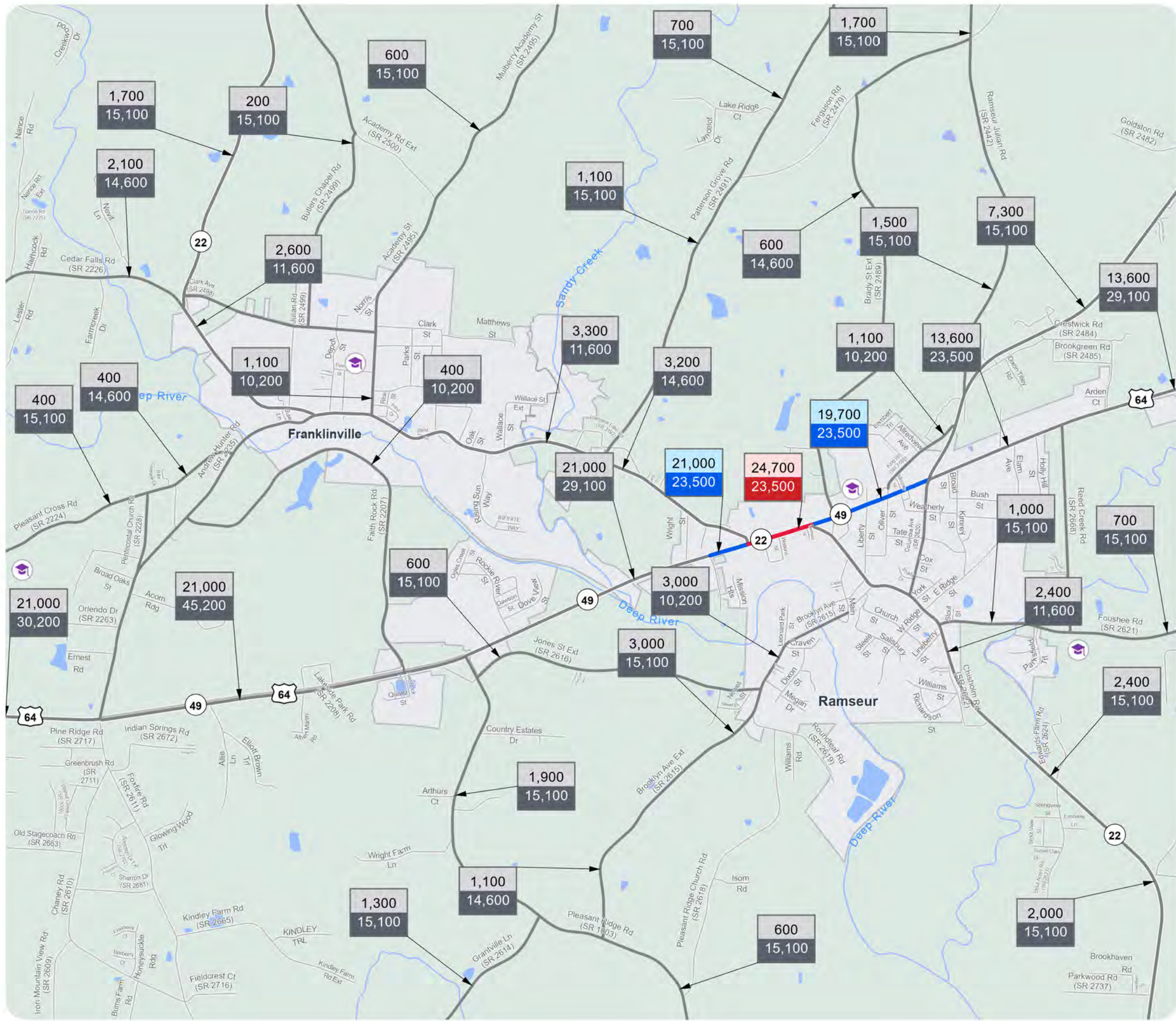
Franklinville & Ramseur Inset

Base map date: April 04, 2024

Legal Disclaimer

This product contains mapping data for informational and planning purposes only, and is subject to change. Users should review or consult the primary data sources to ascertain the usability of the information.

**WORKING COPY**  
 Plan Date: July 23, 2025



**Figure 2**  
**2050 VOLUME AND CAPACITY DEFICIENCIES**



**RANDOLPH COUNTY**  
 CTP Analysis and Information

Volume and Capacity Ratio Features  
 (Future Year 2050)

	Under Capacity (0-0.79)
	Near Capacity (0.80-0.99)
	Over Capacity (1.00+)

Other Features

- Studied Roads
- High Point MPO
- Piedmont Triad RPO



Full report at:  
<https://tinyurl.com/4k2xucan>



Sheet 1F of 7  
 Liberty Inset

Base map date: April 04, 2024

**Legal Disclaimer**

This product contains mapping data for informational and planning purposes only, and is subject to change. Users should review or consult the primary data sources to ascertain the usability of the information.

**WORKING COPY**  
 Plan Date: July 23, 2025

